



Main: East Side Lofts
Frankfurt am Main, Germany
Photography by Nikolas Koenig



The mixed-use building is situated in a rapidly changing neighborhood along Frankfurt's East Harbor (Osthafen). Previously an industrial center of the city, the neighborhood is now becoming a vibrant arts and cultural district.



1913

2013

Construction on the original building, which was envisioned as a factory, began in 1913. However, due to the outbreak of World War I the design was never fully realized. During the war, the building was used as an infirmary, and later in World War II, it was re-purposed as workers' housing. After a century of use, however, the building had never been fully completed according to the original design.



The design addresses two tasks: the renovation of the historic building and a contemporary addition of equal size that completes the original volume. To achieve a cohesive whole, the addition reinterprets the rhythm and proportions of the existing building, but re-imagines them in a modern architectural language with new materials.



The L-shaped addition completes the original building and encloses a landscaped courtyard, offering residents a secluded retreat from the surrounding city. Bakeries and shops on the ground floor anchor the building in the neighborhood and help create a vibrant street-life in the otherwise industrial neighborhood.



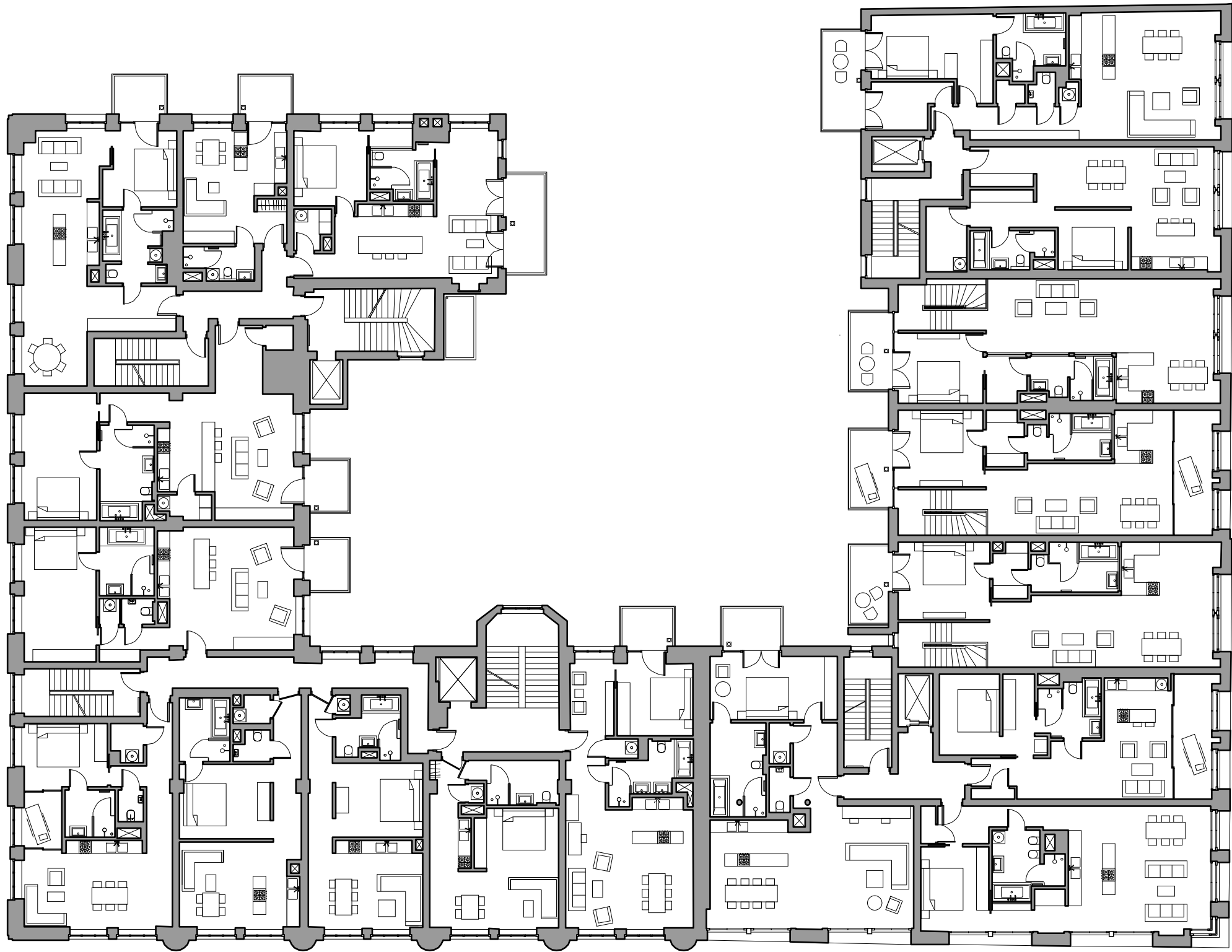
Sustainability Diagram







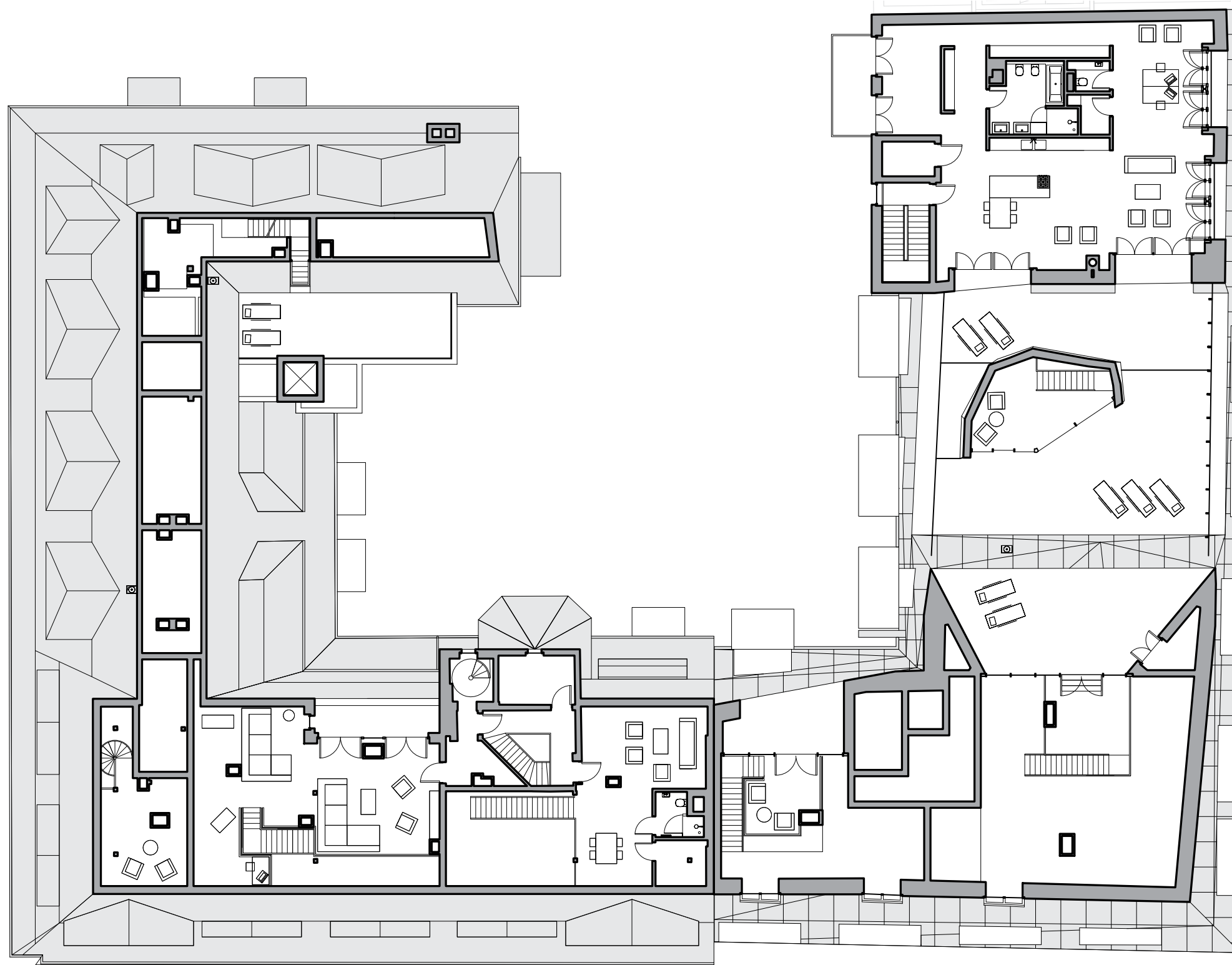
Vibrant color reveals activate the cement fiberboard facade and emphasize the depth of the windows. The acoustical double windows help to soundproof the building from the noise of the harbor.



Second Floor

OSTHAFENPLATZ - EAST SIDE LOFTS
PLAN - FLOOR 02
SCALE 1/64' = 1'-0'





Seventh Floor

OSTHAFENPLATZ - EAST SIDE LOFTS
PLAN - FLOOR 07
SCALE 1/64' = 1'-0'



Cladding

OSTHAFENPLATZ - EAST SIDE LOFTS
GEOMETRY - CLADDING
SCALE 1/64' = 1-0'



The facade was inspired by the original mansard roof and conceived as a continuous wrapper. The outer surface of the building seamlessly folds along the height of the facade to ultimately form the roof.





The renovation maintains the original character of the historic building and expresses it in a modern architectural language. Original timber was incorporated into the renovation, creating an interplay between contemporary and historic elements.

ID # 293515





